

Variable device mount - Individual.Lens.Optic frosted - direct/indirect diffuse distribution - visually continuous

Device mount made of a galvanised, profiled steel sheet; surface coated with polyester resin. Tool-free attachment with design-integrated pressure caps guarantee protection against theft and dismantling. Variable position on the mounting rail. Housing colour traffic white RAL 9016; Light distribution direct/indirect diffuse distribution by means of Individual.Lens.Optic frosted of PMMA plastic, the single lens optics ensure absolute ease of assembly and are simple to maintain thanks to the easily cleaned surface. The inner rhythm of the 3-row single lens arrangement and the overriding device mount are perfectly in tune to guarantee a homogeneous appearance in the object, UGR (4H/8H) 27.3. Heat-resistant cables including connection cable 1 m and rapid installation plug connector with tool-less phase pre-selection and locating finger. They are exchangeable, permit modernisation and reliably prolong the service life of the overall system.

CHARACTERISTICS

Order number	18570406650
EAN number	4020863351220
Commodity code	94051190
Certification mark	IP 20, Protection class I, ENEC10 VDE, F, HACCP DIN10500/Food/IFS-application-related suitability/BRC, Indoor, CE
Impact resistance (IK rating)	IK03 (-20°C bis 25°C)
Ambient temperatur	ta -20°C to 25°C
Special properties	Ready for IoT
Warranty period	5 years

ELECTRICAL ENGINEERING

Controller	Electronic driver DALI2 (1 pcs.)
System output	70W
Mains voltage	230V/50Hz
Energy efficiency class/light source	D

LIGHTING TECHNOLOGY

Placement	LED, Colour rendering/Light colour CRI \geq 80 / 4000K
Colour tolerance (MacAdam)	3SDCM
Nominal luminous flux	9534lm
LED service life	50000h L80/B10 (Tq 25°C)
Luminaire luminous efficiency	137lm/W
Beam angle	115° (C0) / 110° (C90)
UGR lat./long.	27.3 / 26.7

MECHANICS

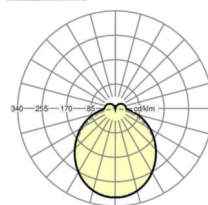
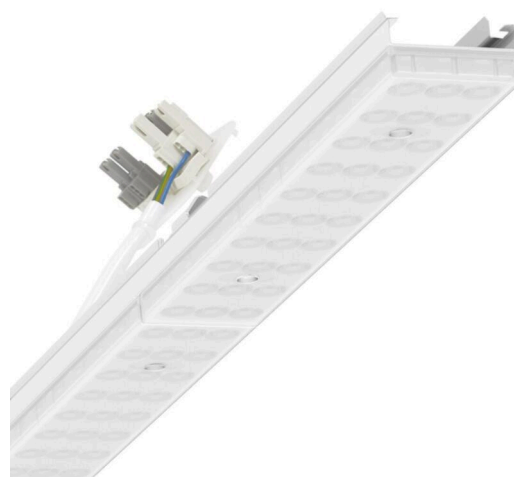
Housing colour	traffic white RAL 9016
Dimensions (LxWxDxH)	1531mm x 55mm x 37mm
Weight (net)	2kg
Type of installation	Mounting rail system installation, Ceiling-mounted mounting rail installation, Ceiling-mounted mounting rail installation on T-system, Pendulum mounting rail assembly on chain, Pendulum mounting rail installation on steel cable

Dimensions

L	1531 mm	Length
B	55 mm	Width
H	37 mm	Height

DEEP-LINK

<https://www.regiolux.de/en/article/18570406650>



Reference	LED 10000lm 840
η_{LB}	100 %
$\Phi_{\downarrow/\uparrow}$	90 % / 10 %
UGR lat./long.	27.3 / 26.7

